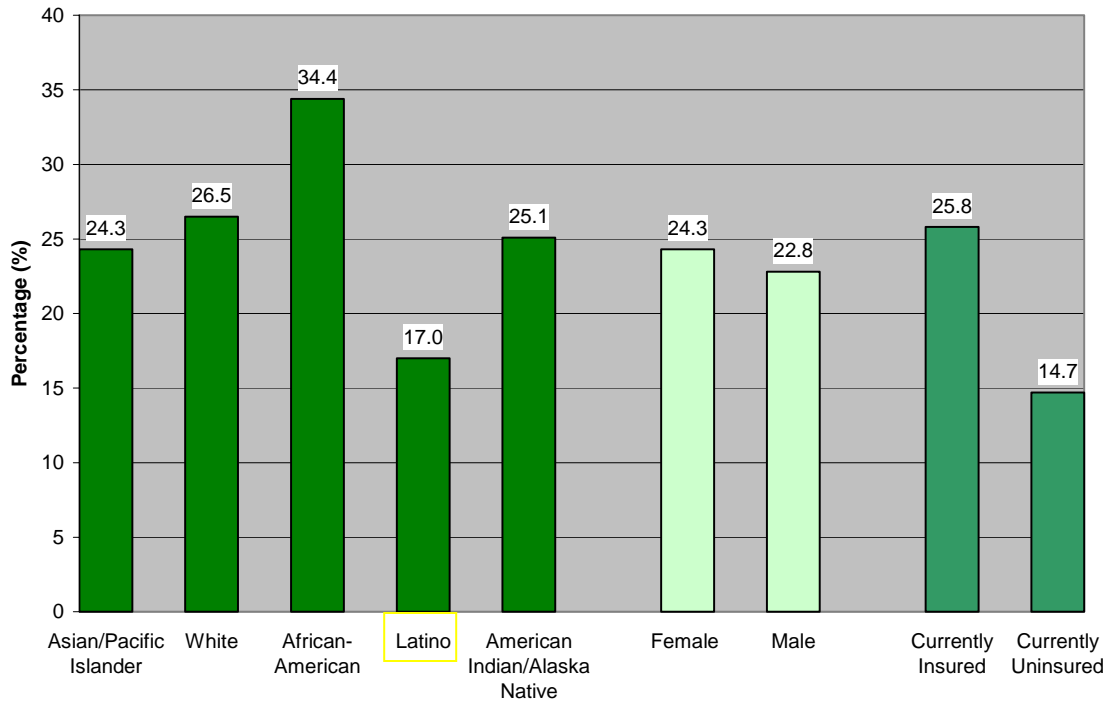


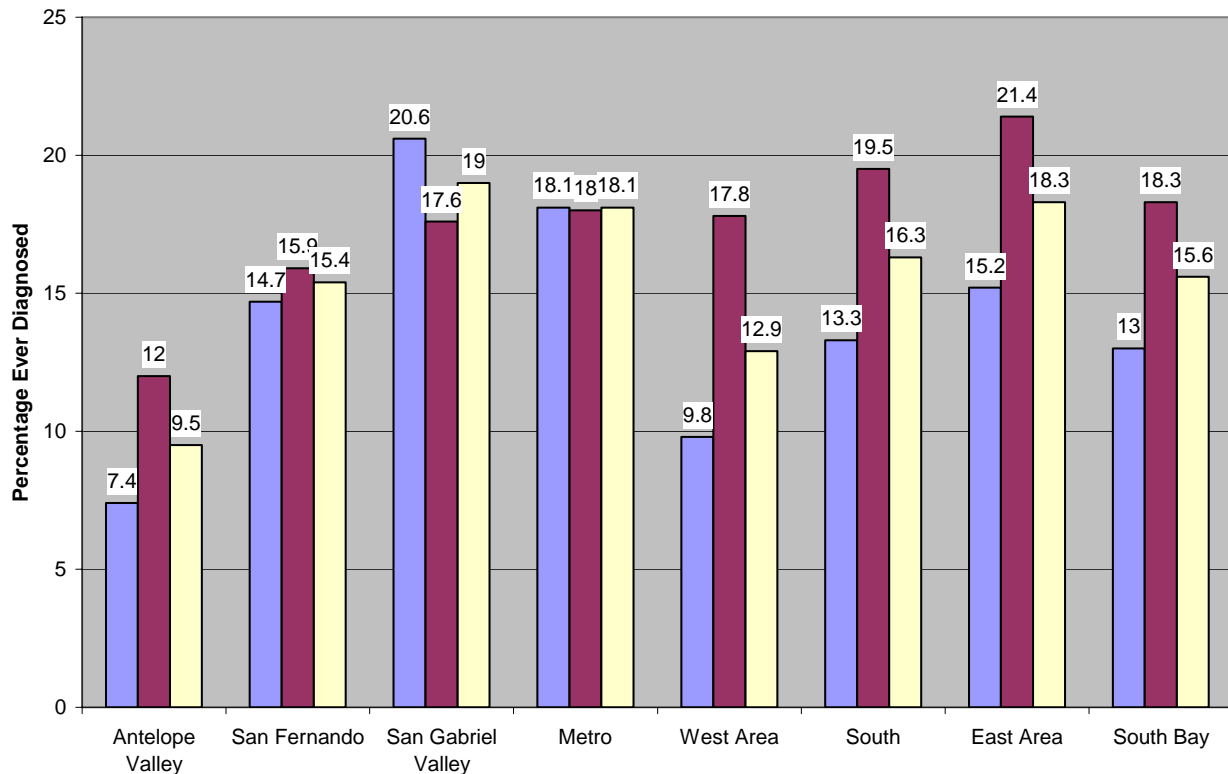
## Hypertension in LA County's Latino Population

**Percent of Individuals (All Ages) that Have Ever Been Diagnosed with High Blood Pressure  
Los Angeles County, 2003**



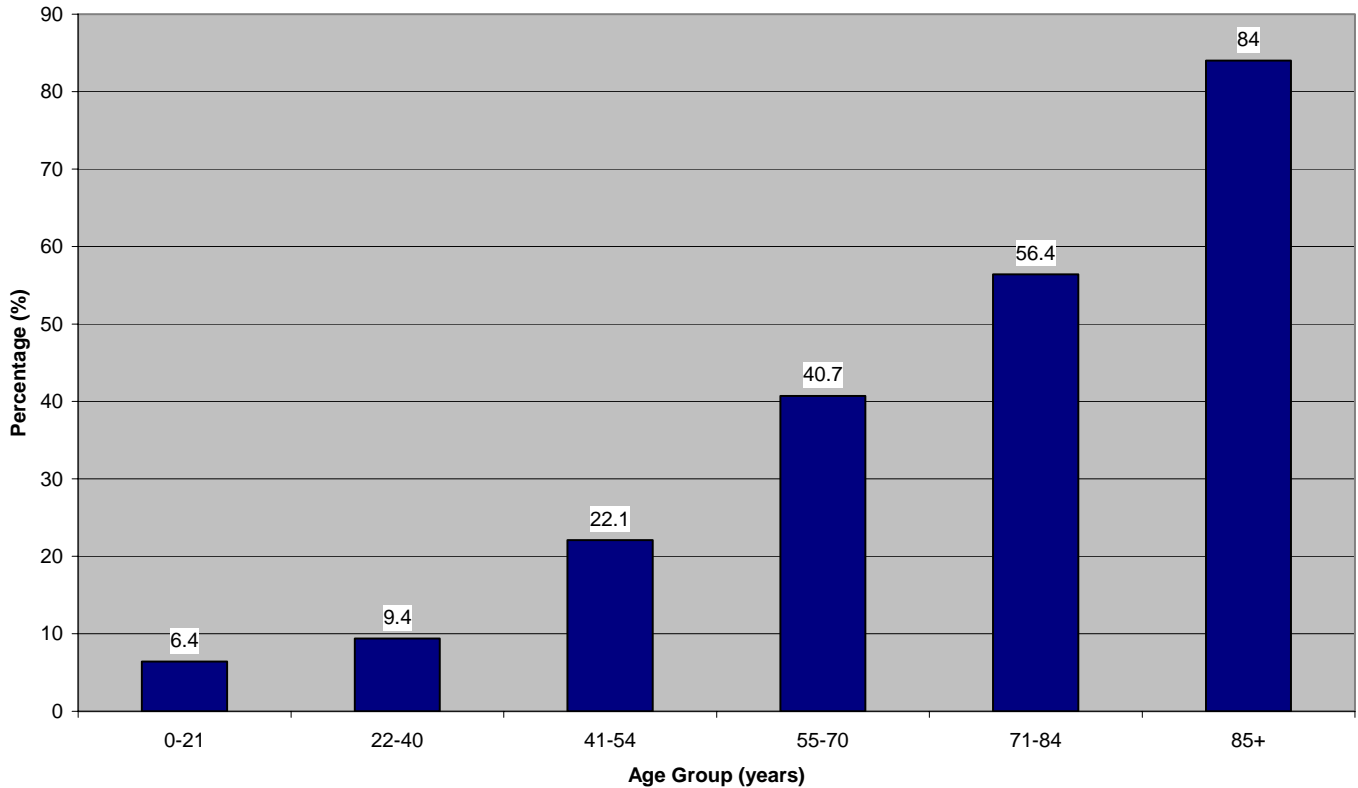
Source: 2003 California Health Interview Survey  
AskCHIS: <http://www.chis.ucla.edu/main/DQ2/easy/subset.asp>

**Percentage of Latino Adults (18+) in each SPA (Service Planning Area) Ever Diagnosed with High Blood Pressure, by Gender, Los Angeles County, 2003**



Source: 2003 California Health Interview Survey  
AskCHIS: <http://www.chis.ucla.edu/main/DQ2/easy/subset.asp>

**Percentage of Latinos Ever Diagnosed with High Blood Pressure, by Age Group,  
Los Angeles County, 2003**



Source: 2003 California Health Interview Survey

AskCHIS: <http://www.chis.ucla.edu/main/DQ2/easy/subset.asp>

The following information is excerpted from the County of Los Angeles Department of Health Services, Public Health, 2003, Latino Health Issues – Fact Sheet.

<http://www.lapublichealth.org/spa7/docs/LatinoFactSheet.pdf>

- Overweight children face greater risk for type II diabetes, hypertension, and high blood lipids, among other problems.
- Obesity is associated with more than 30 medical conditions including hypertension, heart disease, and type II diabetes.
- Immigrants' risks of smoking, obesity, hypertension, and chronic conditions, although substantially lower than those for the US-born, increase with increasing length of US residence.