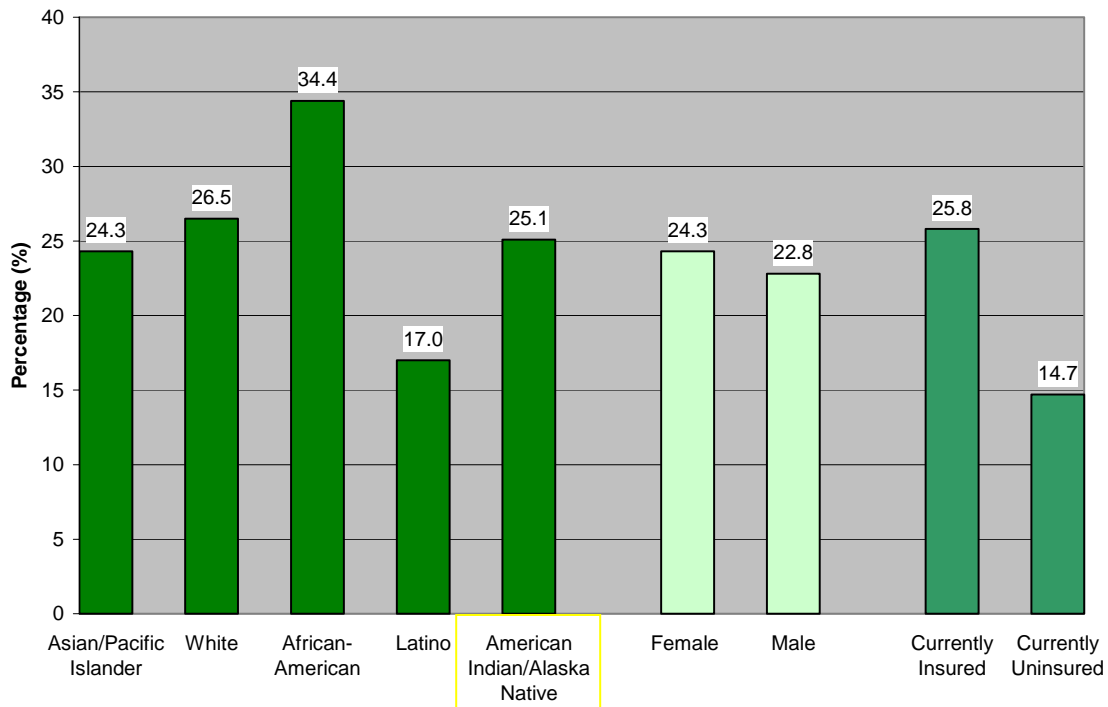


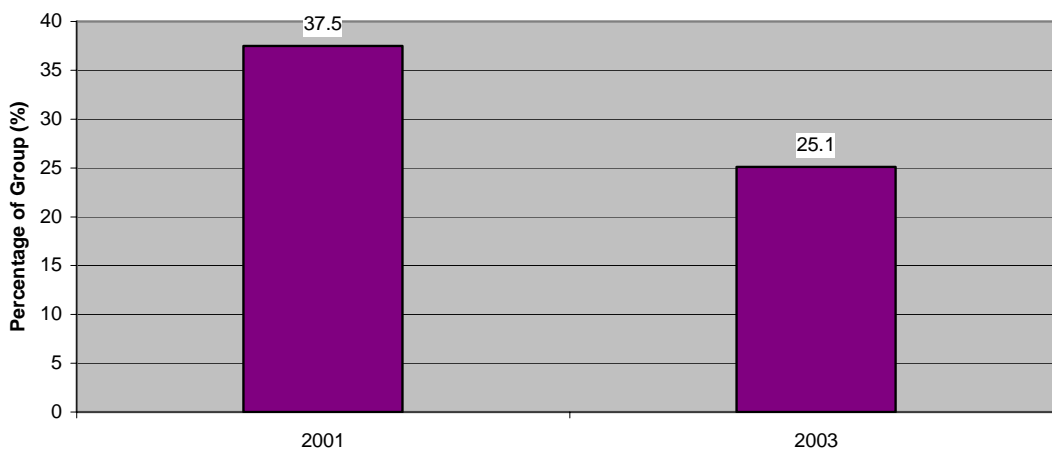
Hypertension in LA County's American Indian and Alaska Native Population

Percent of Individuals (All Ages) that Have Ever Been Diagnosed with High Blood Pressure
Los Angeles County, 2003



Source: 2003 California Health Interview Survey
AskCHIS: <http://www.chis.ucla.edu/main/DQ2/easy/subset.asp>

Percentage of American Indians and Alaska Natives Ever Having Been Diagnosed with High Blood Pressure, Los Angeles County, 2001 vs. 2003



Source: 2003 California Health Interview Survey
AskCHIS: <http://www.chis.ucla.edu/main/DQ2/easy/subset.asp>

- Overweight children face greater risk for type II diabetes, hypertension, and high blood lipids, among other problems.
- Obesity is associated with more than 30 medical conditions including hypertension, heart disease, and type II diabetes.

- Excerpted from the County of Los Angeles Department of Health Services, Public Health, 2003, Latino Health Issues – Fact Sheet; <http://www.lapublichealth.org/spa7/docs/LatinoFactSheet.pdf>