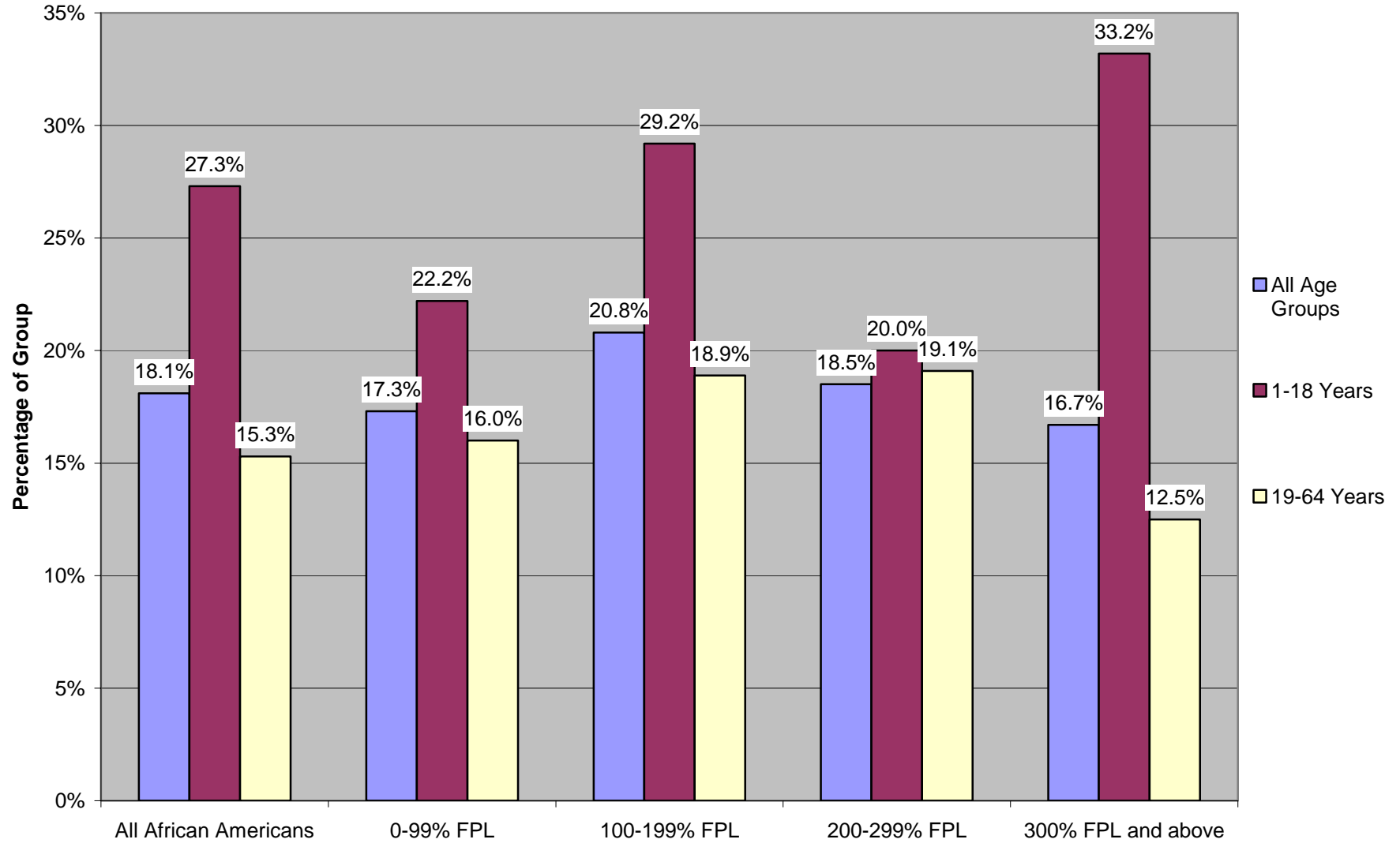


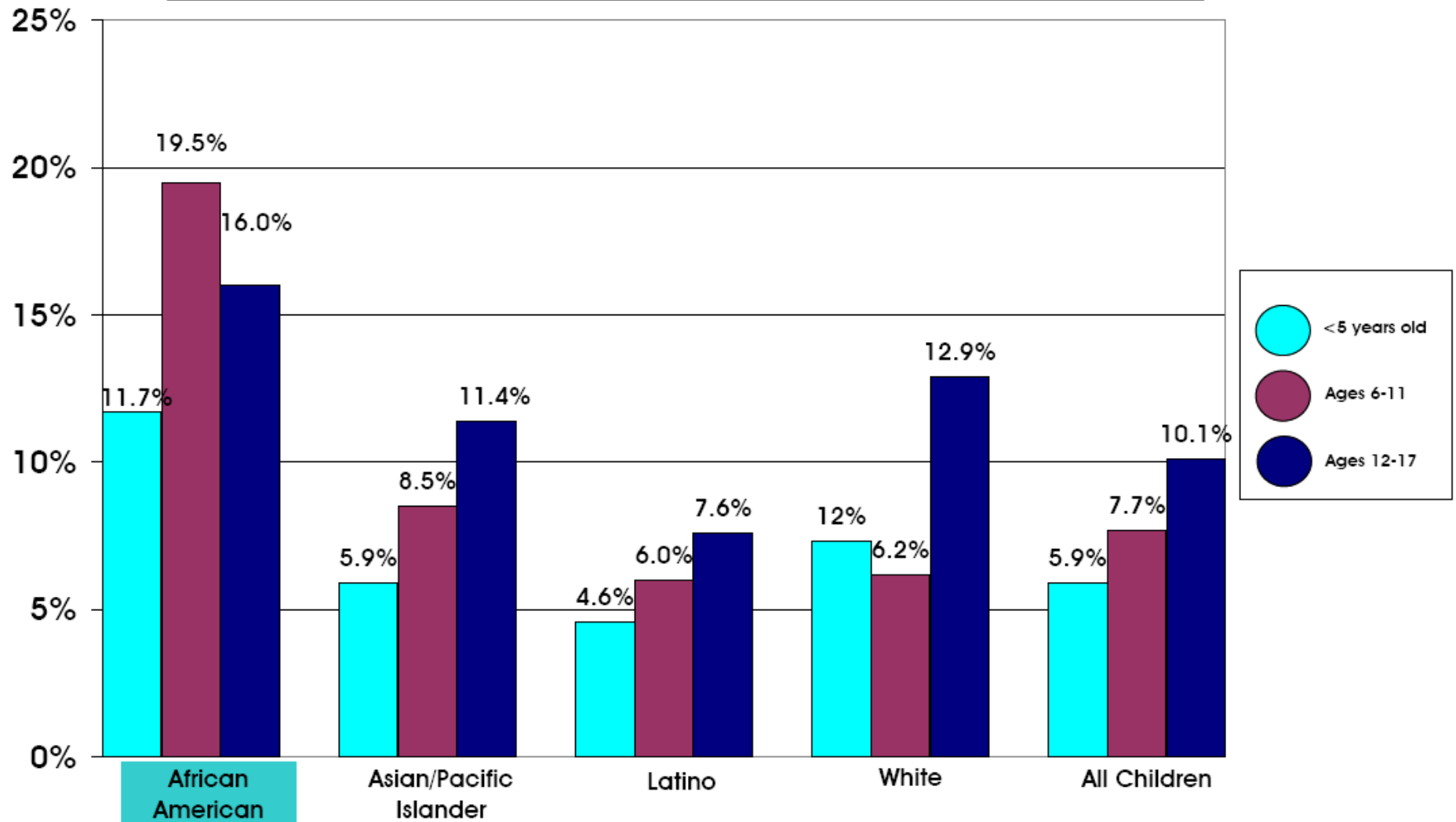
## Asthma in LA County's Black Population

### African Americans Diagnosed with Asthma Compared by Age and Economic Status (Federal Poverty Level), Los Angeles County, 2003



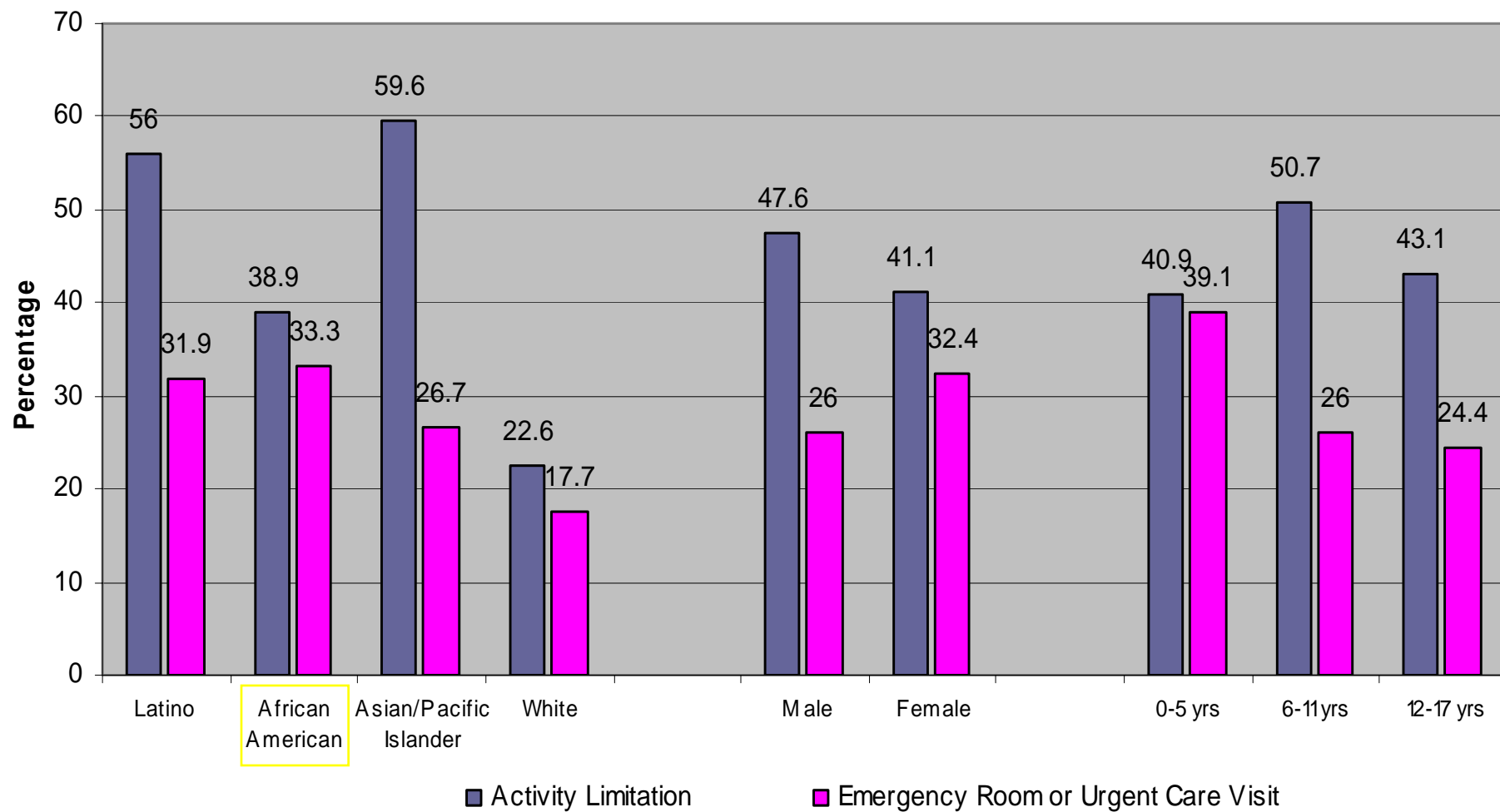
Source: 2001 California Health Interview Survey  
AskCHIS: [www.chis.ucla.edu](http://www.chis.ucla.edu)

Children Under Age 17 with Asthma by Race/Ethnicity  
in LA County, 2002



Source: Los Angeles County Department of Health Services, Office of Health Assessment and Epidemiology, 2002-2003 Los Angeles County Health Survey; [http://lapublichealth.org/wwwfiles/ph/hae/ha/childasthmabrief\\_1004.pdf](http://lapublichealth.org/wwwfiles/ph/hae/ha/childasthmabrief_1004.pdf) (Page 3)

### Activity Limitation and Emergency Room/Urgent Care Visit Among Persons with Asthma by Race/Ethnicity, Age or Sex in Los Angeles County, 2002-2003



Source: Los Angeles County Department of Health Services, L.A. Health Childhood Asthma  
[http://search.ladhs.org/wwwfiles/ph/hae/ha/childasthmbrief\\_1004.pdf](http://search.ladhs.org/wwwfiles/ph/hae/ha/childasthmbrief_1004.pdf) (Page 4)