

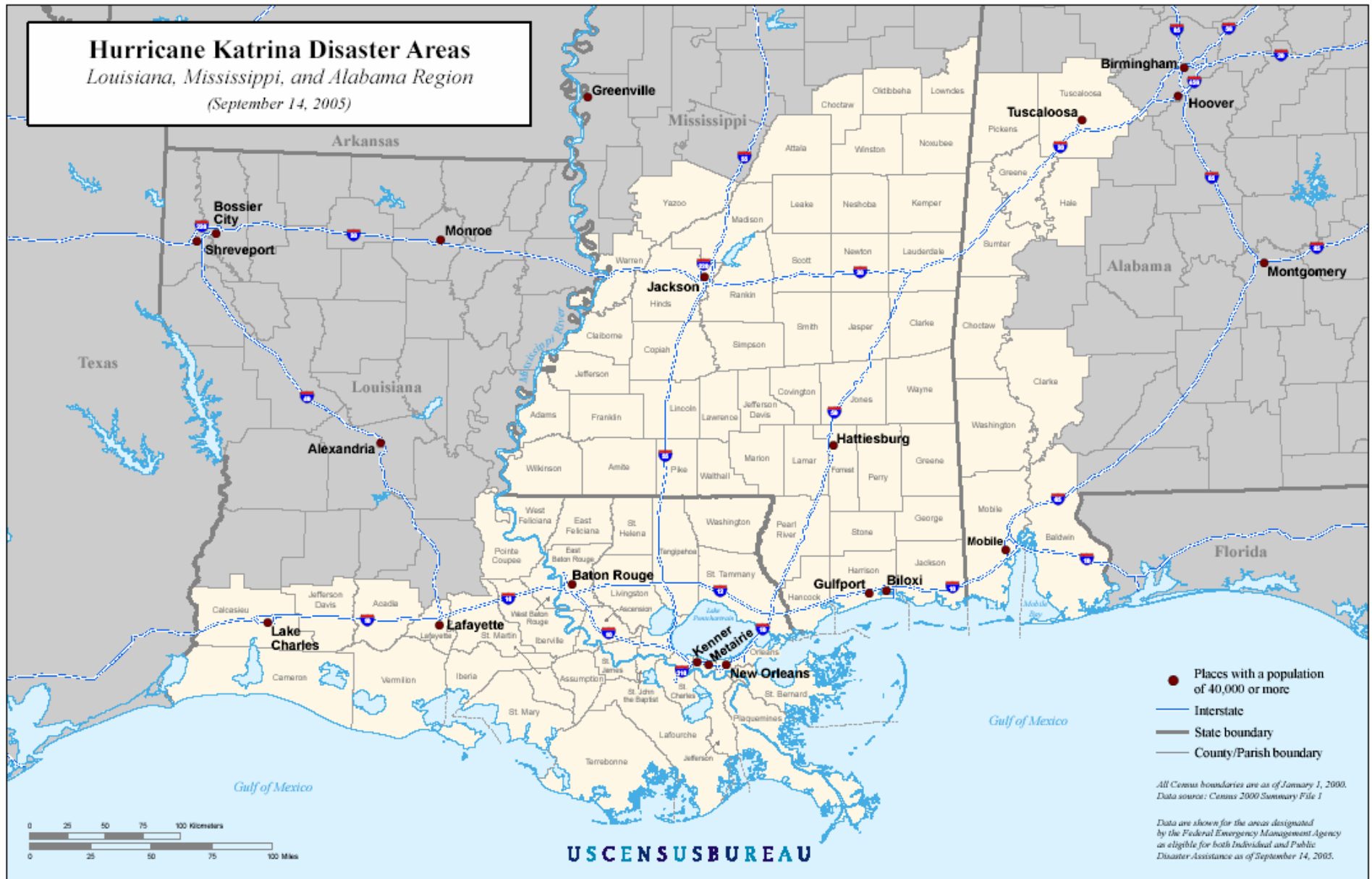
# Confronting Katrina: race, class, and disaster in American society



## Race, Class, and the Unequal Risk of Catastrophe

Center for Comparative Studies of Race and Ethnicity, Stanford University  
October 10, 2005 with support from the Office of the Provost and the  
Stanford Continuing Studies Program.

**Hurricane Katrina Disaster Areas**  
*Louisiana, Mississippi, and Alabama Region*  
*(September 14, 2005)*



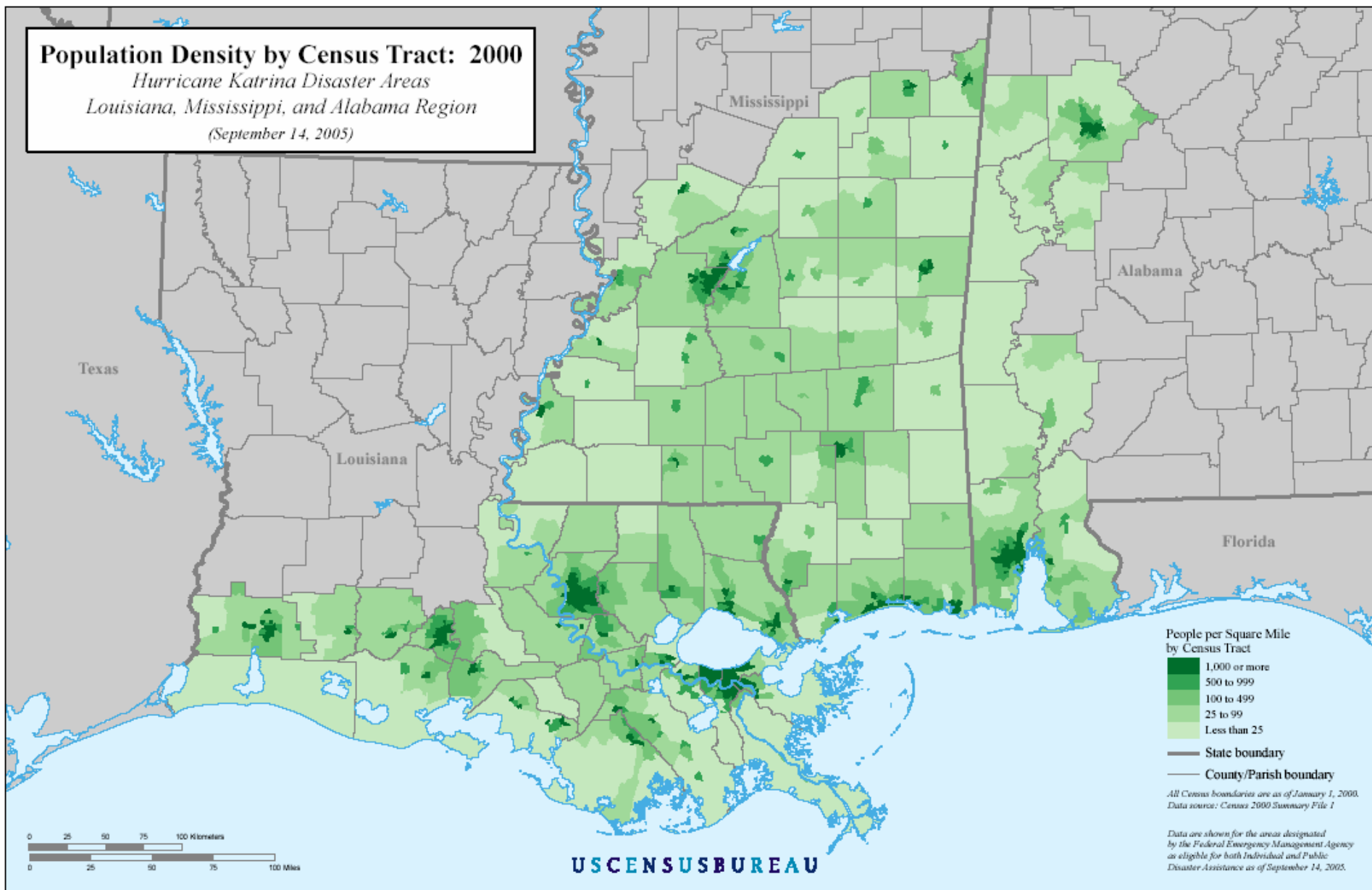
- Places with a population of 40,000 or more
- Interstate
- State boundary
- County/Parish boundary

*All Census boundaries are as of January 1, 2000.  
 Data source: Census 2000 Summary File 1*

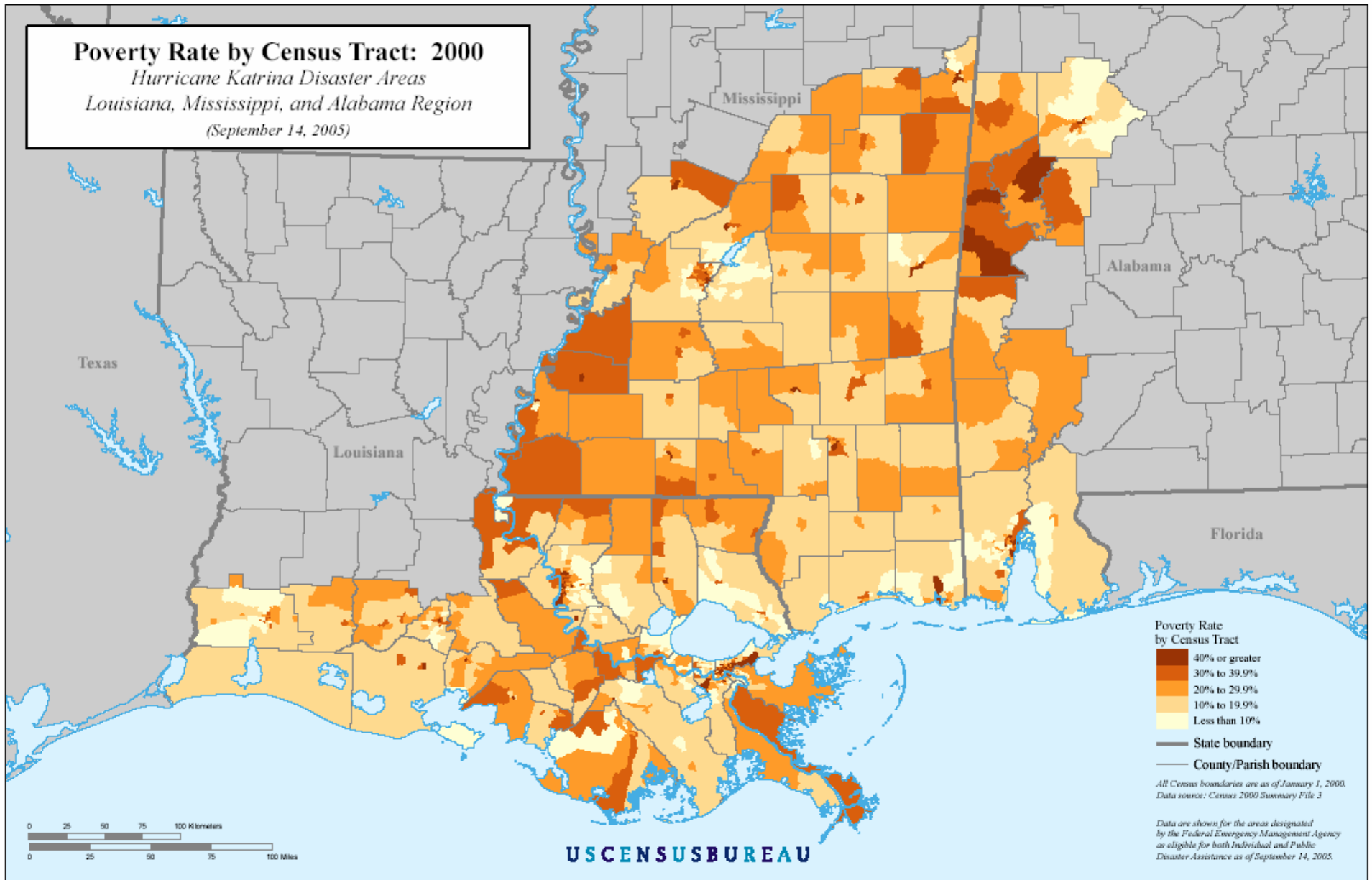
*Data are shown for the areas designated by the Federal Emergency Management Agency as eligible for both Individual and Public Disaster Assistance as of September 14, 2005.*

# Population Density by Census Tract: 2000

*Hurricane Katrina Disaster Areas  
Louisiana, Mississippi, and Alabama Region  
(September 14, 2005)*



**Poverty Rate by Census Tract: 2000**  
*Hurricane Katrina Disaster Areas*  
*Louisiana, Mississippi, and Alabama Region*  
*(September 14, 2005)*



**Poverty Rate by Census Tract**

- 40% or greater
- 30% to 39.9%
- 20% to 29.9%
- 10% to 19.9%
- Less than 10%

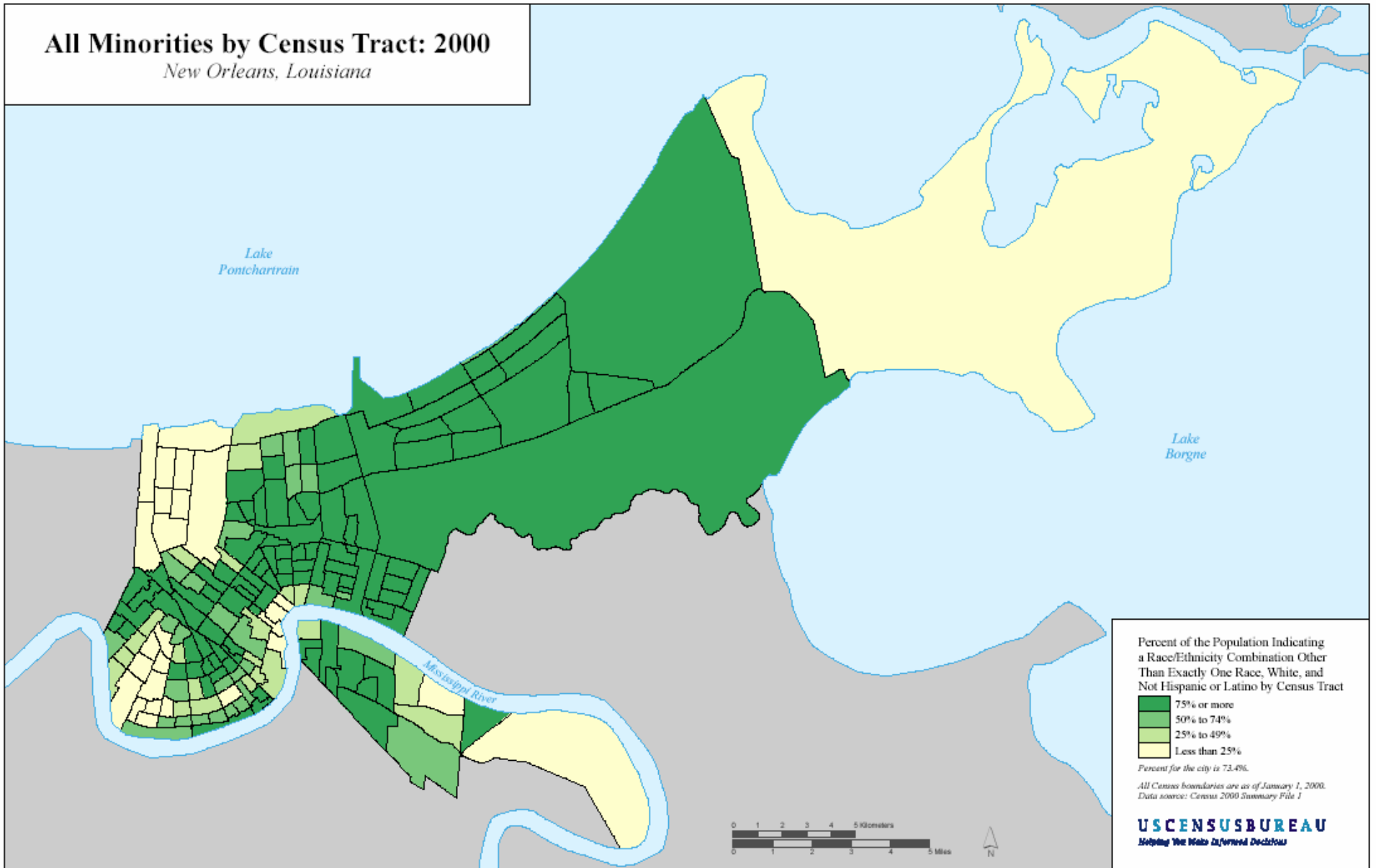
— State boundary  
 — County/Parish boundary

*All Census boundaries are as of January 1, 2000.  
 Data source: Census 2000 Summary File 3*

*Data are shown for the areas designated by the Federal Emergency Management Agency as eligible for both Individual and Public Disaster Assistance as of September 14, 2005.*

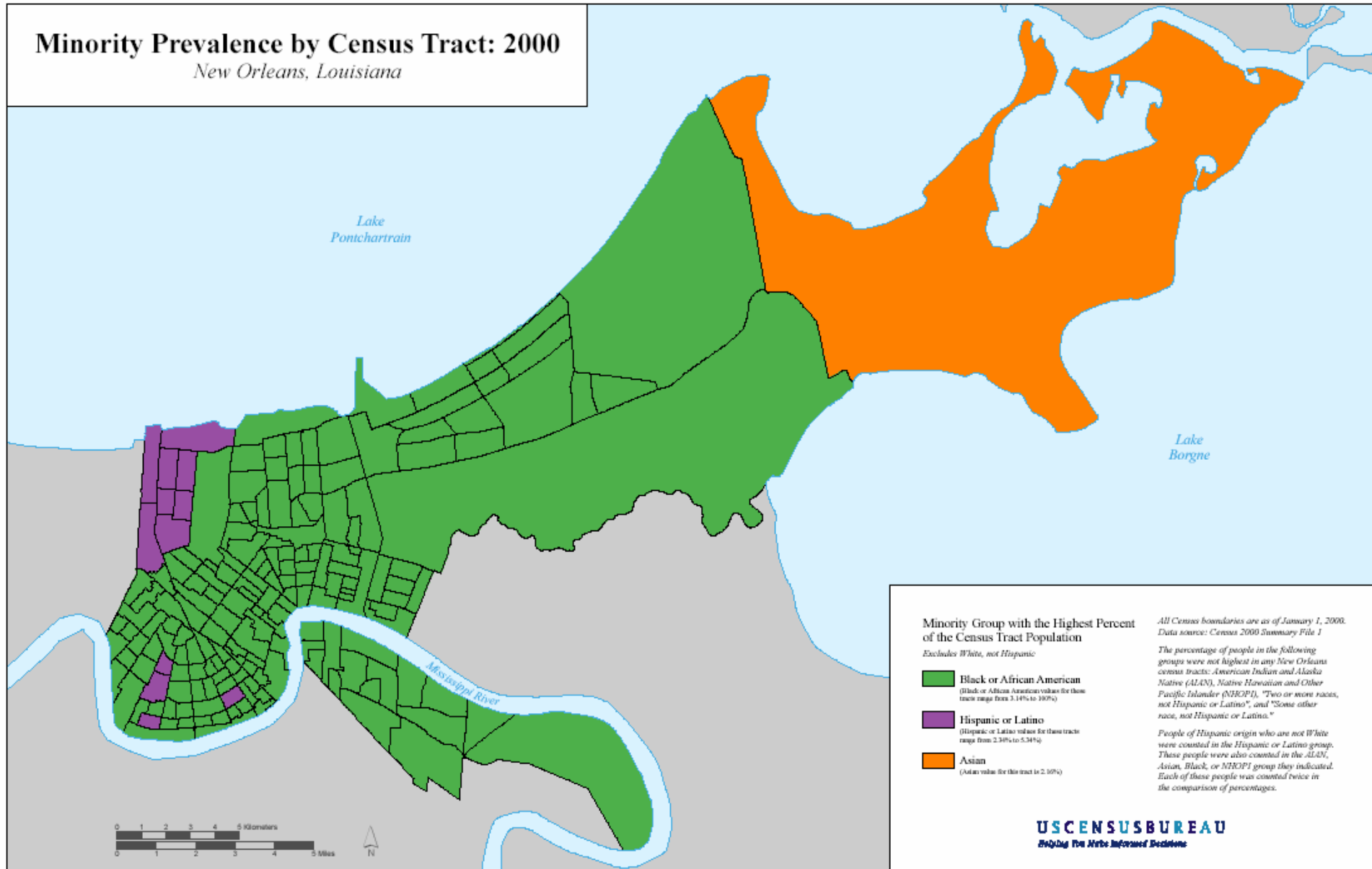
# All Minorities by Census Tract: 2000

New Orleans, Louisiana



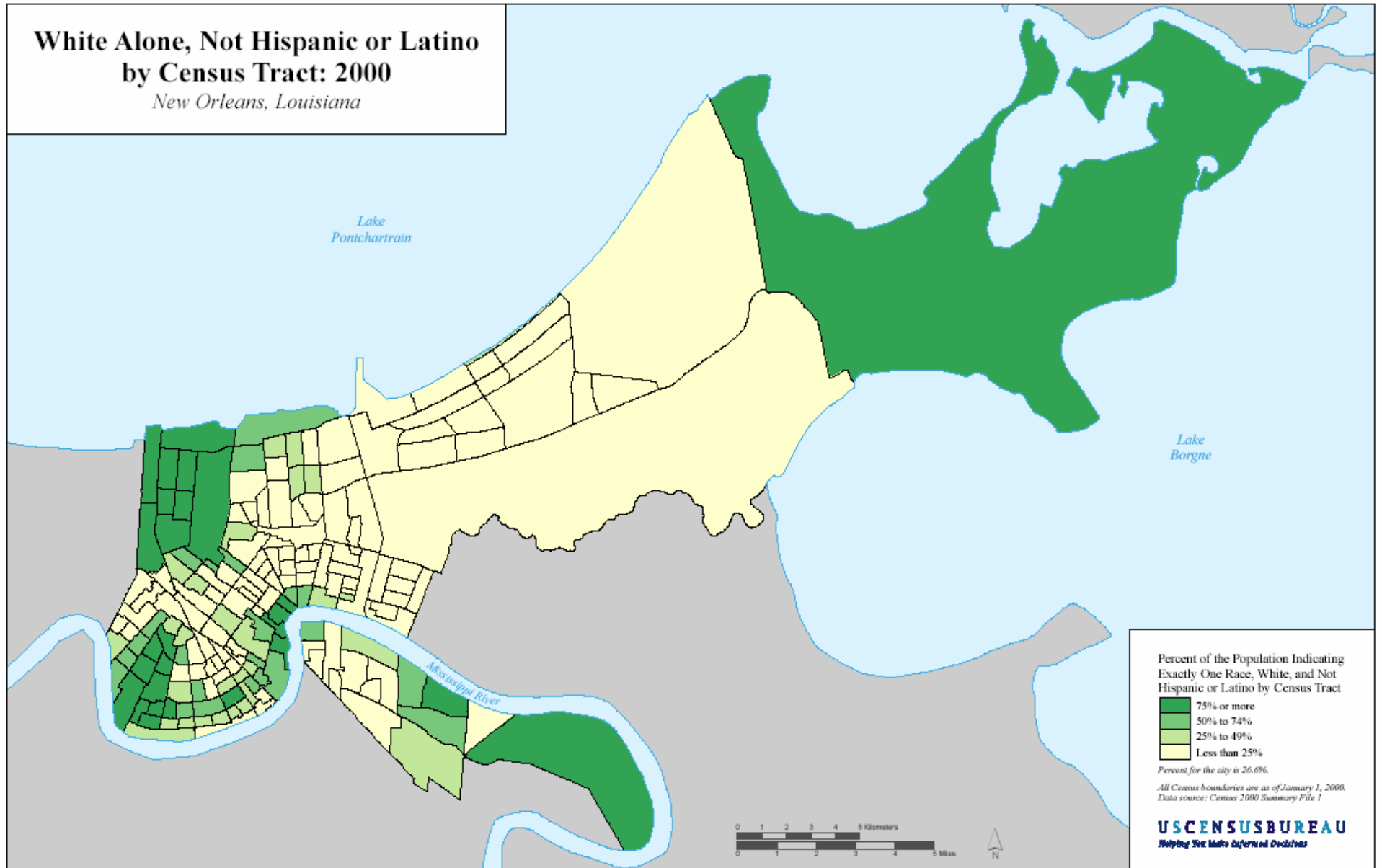
# Minority Prevalence by Census Tract: 2000

New Orleans, Louisiana

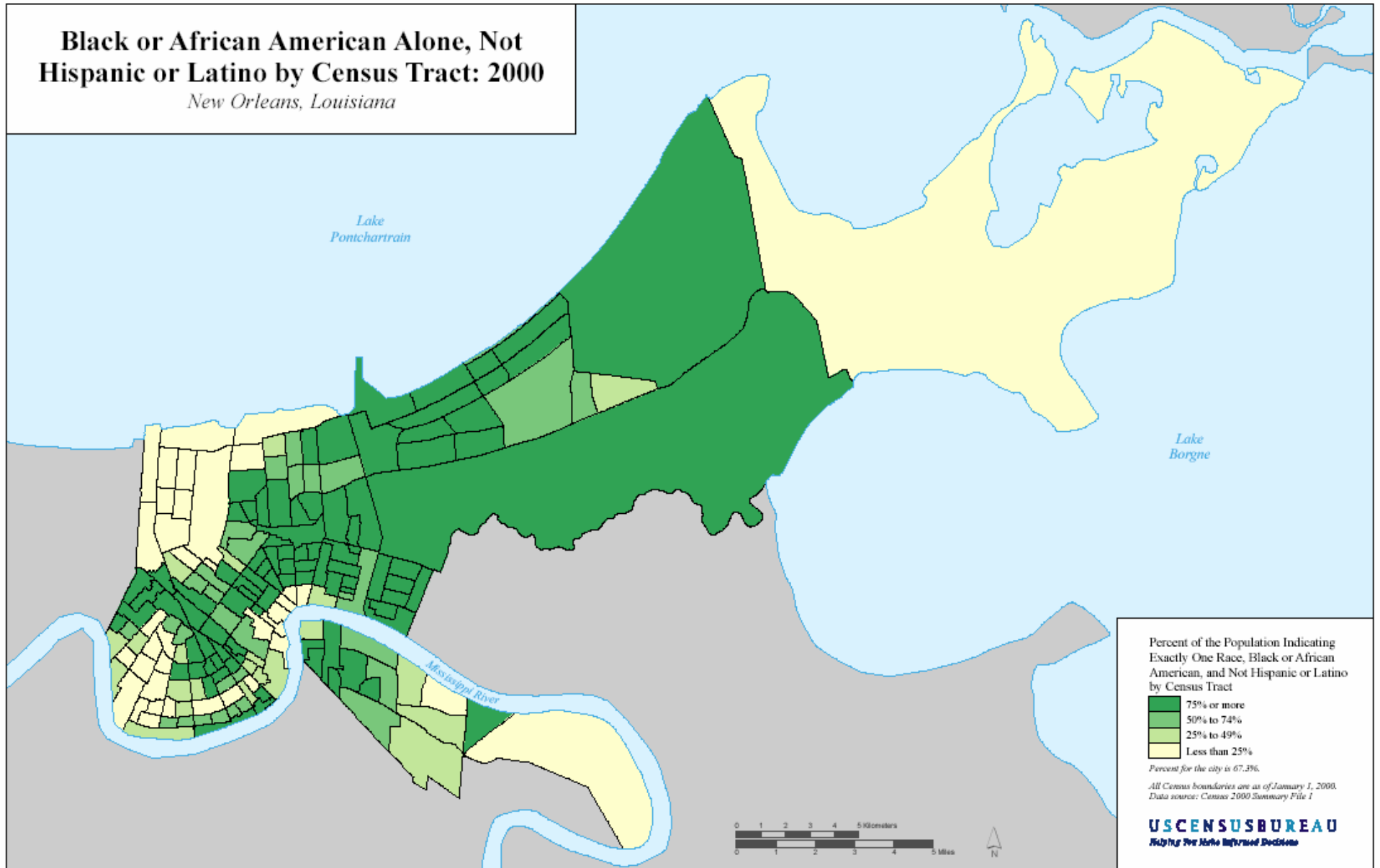


# White Alone, Not Hispanic or Latino by Census Tract: 2000

*New Orleans, Louisiana*



**Black or African American Alone, Not Hispanic or Latino by Census Tract: 2000**  
*New Orleans, Louisiana*





# Median Household Income in 1999 by Census Tract

New Orleans, Louisiana

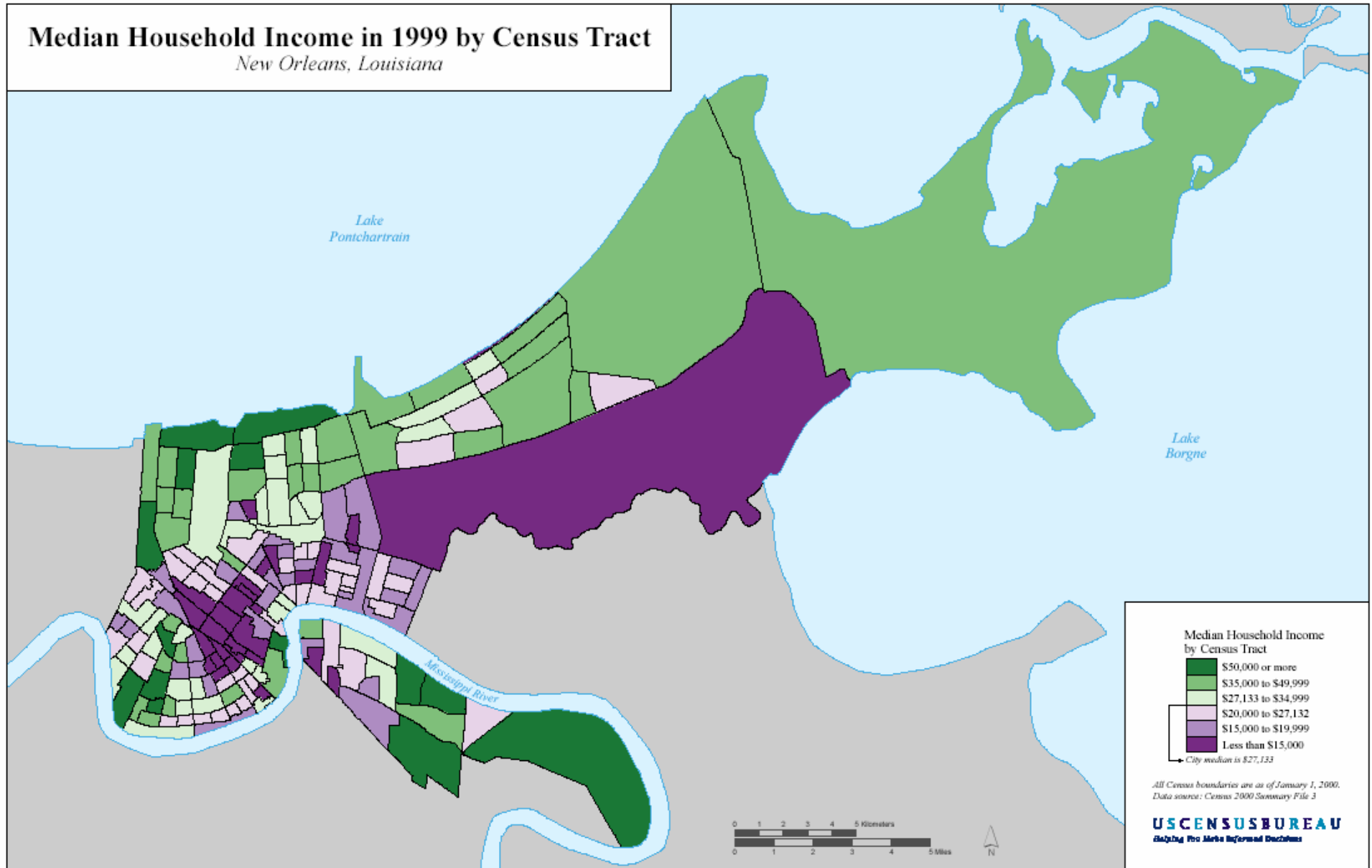
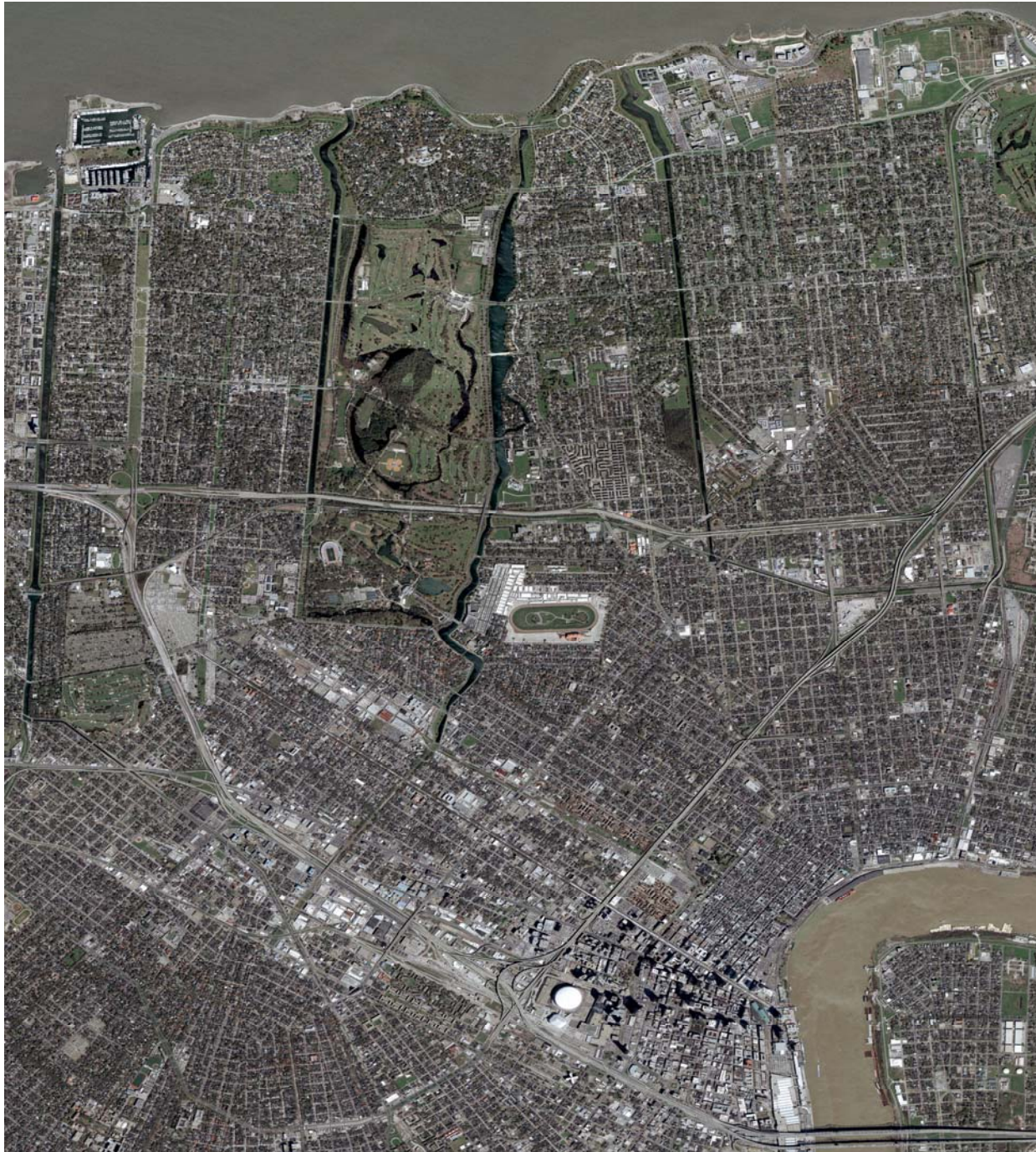
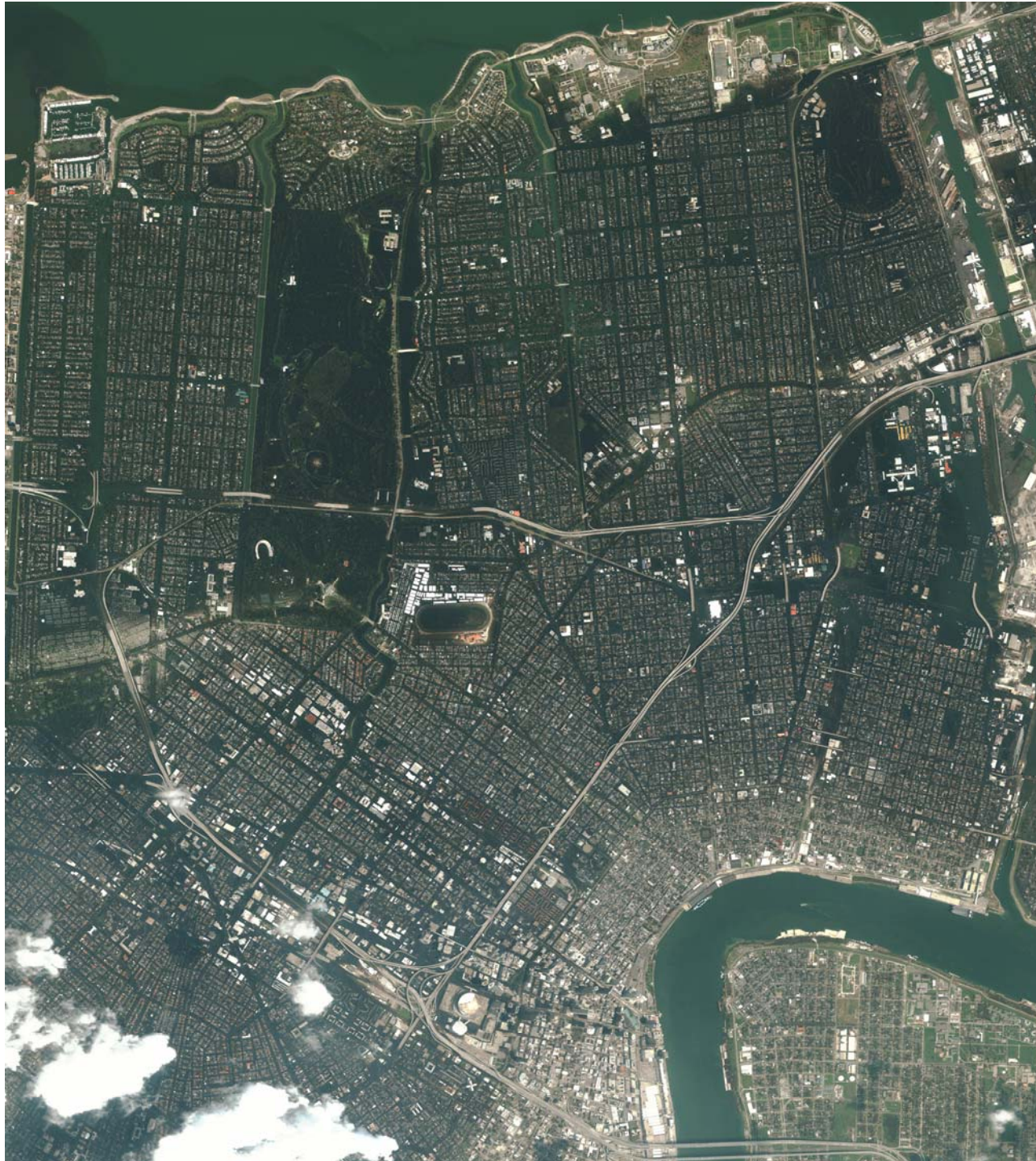


Photo courtesy of  
DigitalGlobe.com

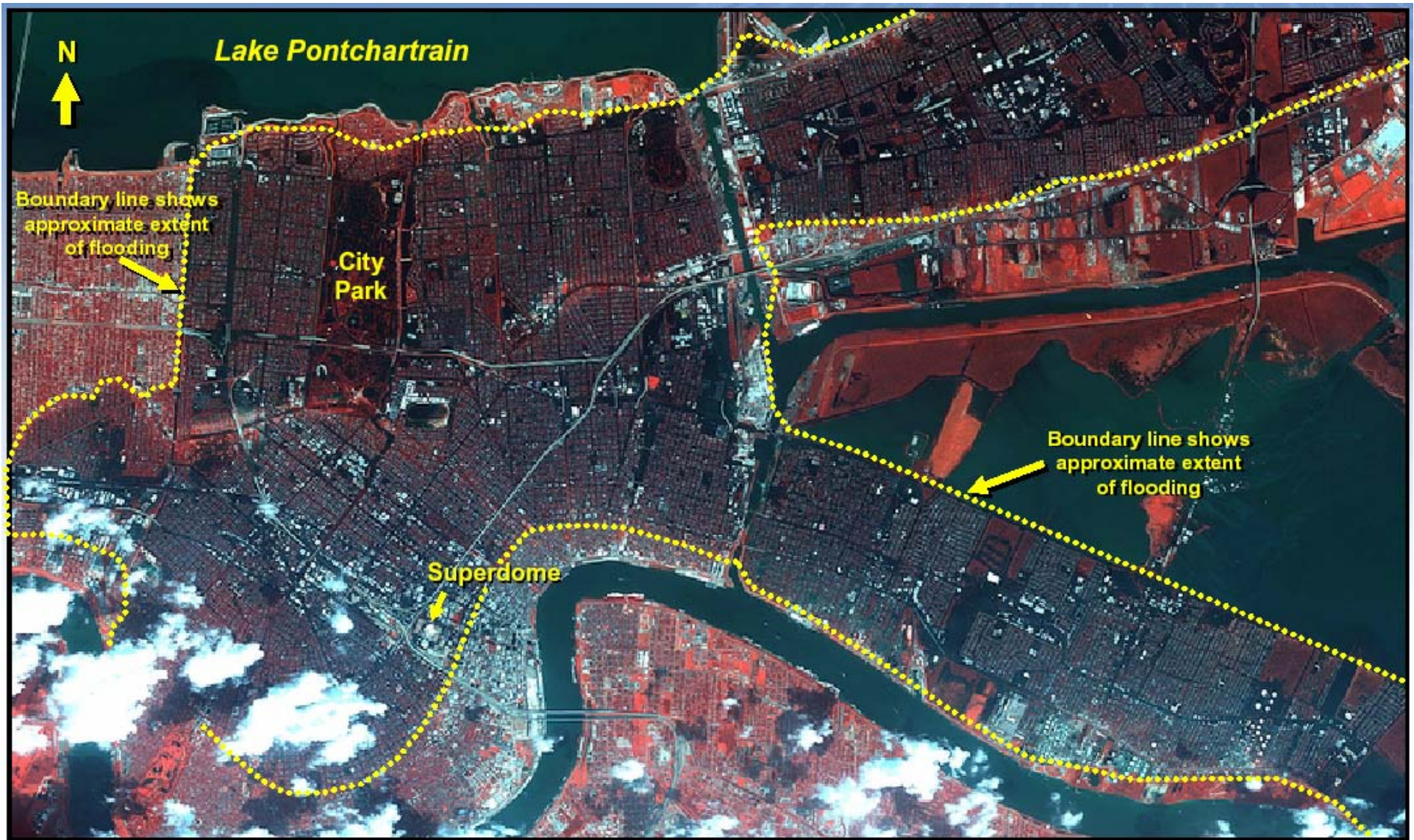


Before...

Photo courtesy of  
DigitalGlobe.com



...After



N



Lake Pontchartrain

Boundary line shows approximate extent of flooding



City Park

Superdome



Boundary line shows approximate extent of flooding



Next session:

**Media, Culture, and the Politics of Representation:  
Viewing a Racialized Disaster**

October 24th in **CUBBERLEY AUDITORIUM** 7-9 PM

Marcy Morgan and Shianto Iyengar (Communication), Brian Lowery (Graduate School of Business), and Hazel Markus (Psychology)

## Course Coordinators:

Chris Queen

Dorothy Steele

Larry Bobo

Hazel Markus

## Slideshow Contributors:

Neha Berlia

Hilary Bergsieker

Lisa Flores

Chan Hong Io

Nayantara Kothari

Tera Perez

Nina Qi

Matt Snipp

Abby Speight

Nicole Stephens

Vernorris Taylor

Adriana Windham

Next session:

**Media, Culture, and the Politics of Representation:  
Viewing a Racialized Disaster**

October 24th in **CUBBERLEY AUDITORIUM** 7-9 PM

Marcy Morgan and Shianto Iyengar (Communication), Brian Lowery (Graduate School of Business), and Hazel Markus (Psychology)