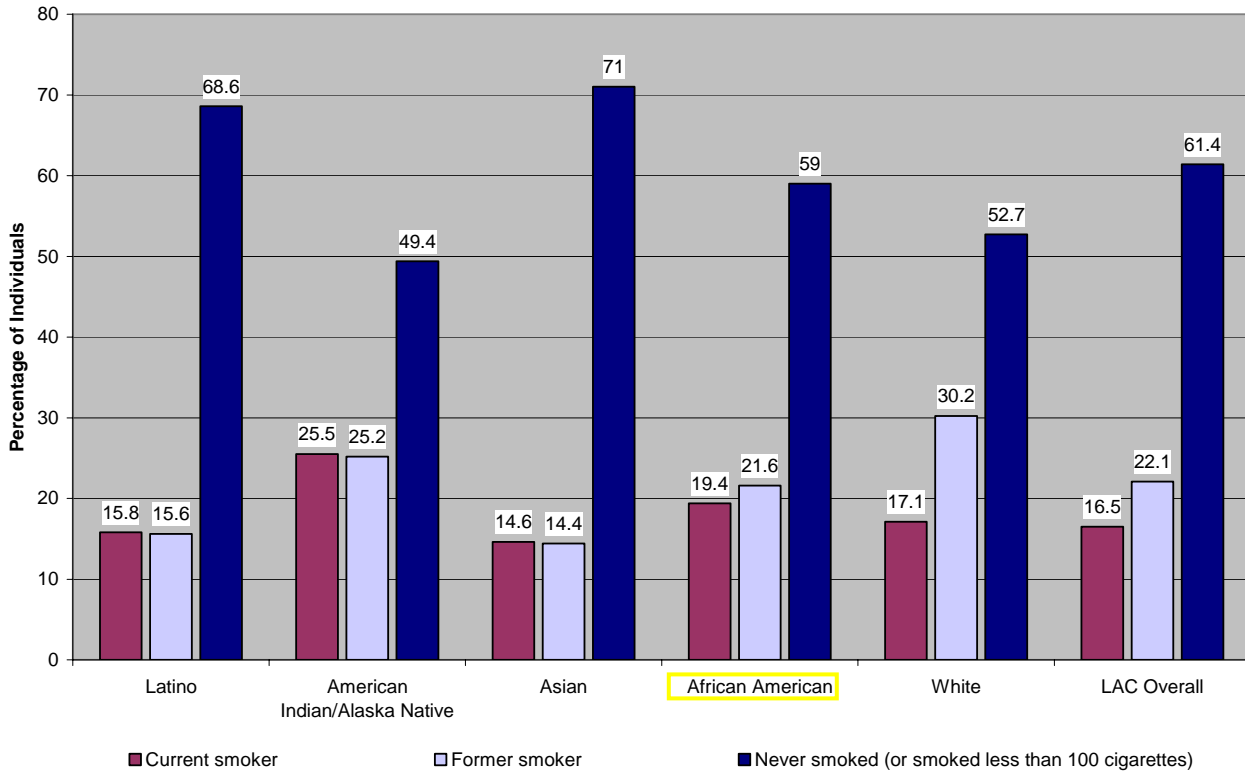


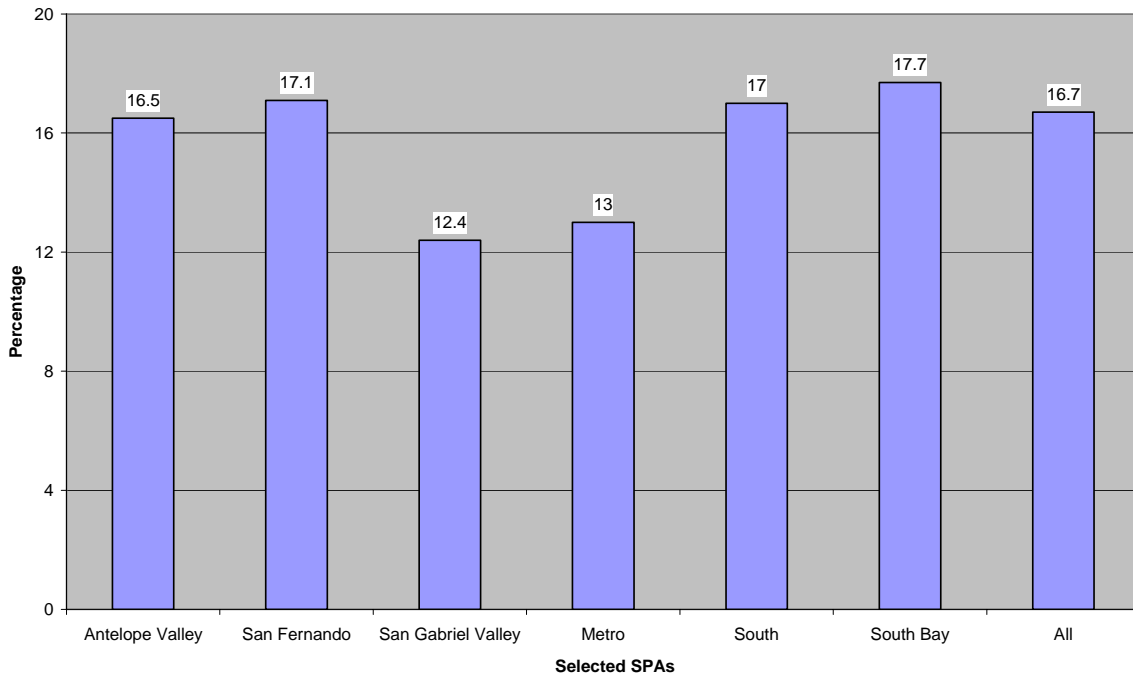
## Smoking Status in LA's Black Population

**Smoking Status of Adults (Current, Former, Never), compared by Race  
in Los Angeles County, 2003**



Source: California Health Interview Survey, 2003 (UCLA Center for Health Policy Research)  
[www.chis.ucla.edu](http://www.chis.ucla.edu)

**Percentage of African American Adults and Teens who are Current Smokers, compared by Los Angeles County  
Service Planning Areas (SPA), 2003**

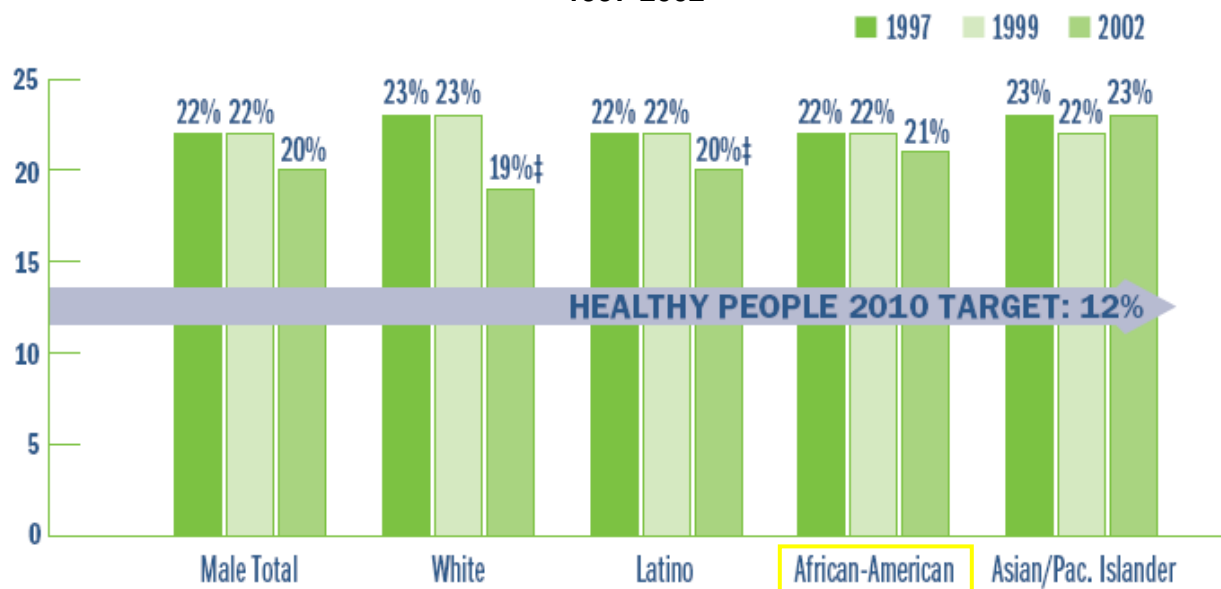


(\* SPAs not included contain unreliable data)

Source: California Health Interview Survey, 2003 (UCLA Center for Health Policy Research)  
[www.chis.ucla.edu](http://www.chis.ucla.edu)

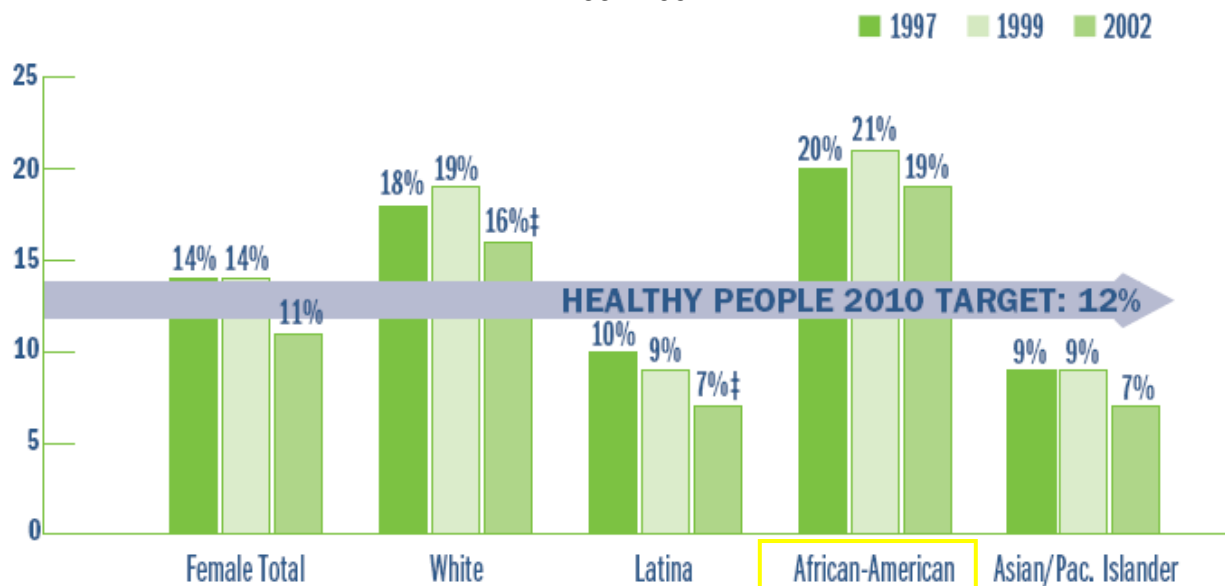
The graphs below are from the following source:  
 L.A. Health (Brief): Adult Smoking, Los Angeles County Department of Health Services  
<http://search.ladhs.org/wwwfiles/ph/hae/ha/lahealthsmoking.pdf> (Page 2)

**Percentage of Male Cigarette Smokers by Race/Ethnicity in Los Angeles County, 1997-2002**



‡ From 1997 to 2002, trend analysis revealed significant declines ( $p < .05$ ).

**Percentage of Female Cigarette Smokers by Ethnicity in Los Angeles County, 1992-2002**



‡ From 1997 to 2002, trend analysis revealed significant declines ( $p < .05$ ).