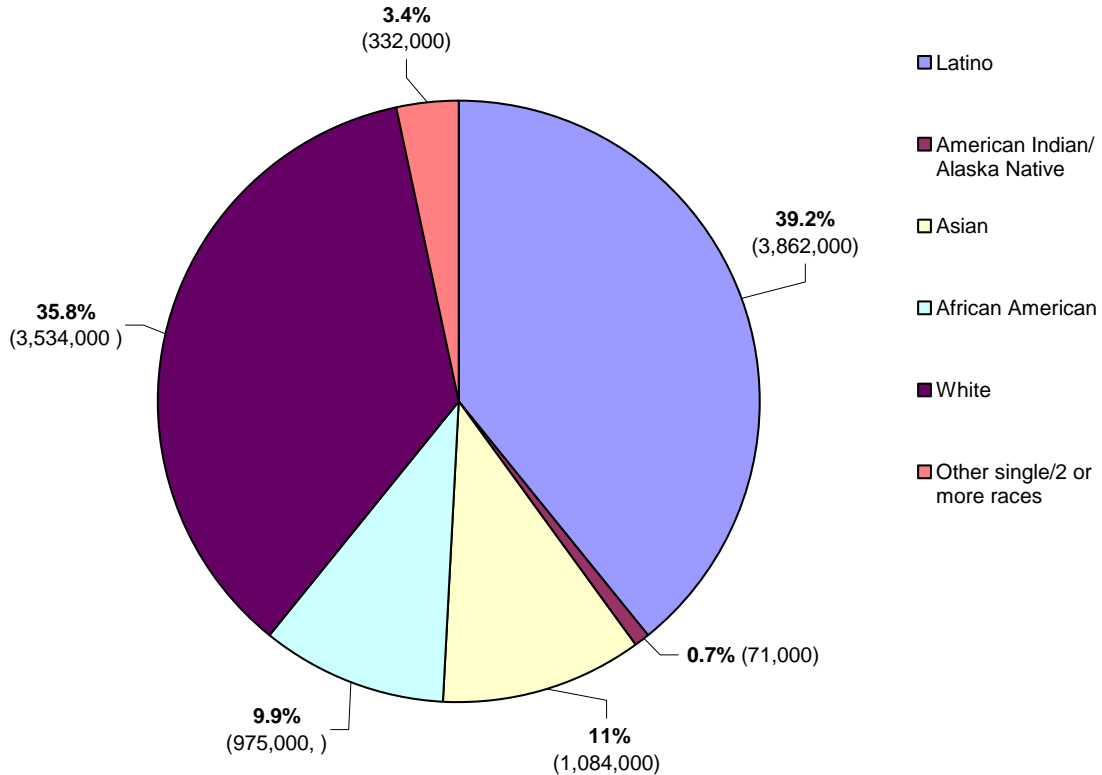


Demographic Information for LA County's American Indian/Alaska Native Population

The Los Angeles region is home to about 3 percent of the nation's 3.7 million American Indians and Alaska Natives (AI/ANs). Not only are AI/ANs in Los Angeles County the largest urbanized AIAN population in the nation, but their numbers are rapidly growing.

Source: Los Angeles American Indian Children's Council, UCLA Ralph & Goldy Lewis Center for Regional Policy Studies, 2004; <http://lewis.spsr.ucla.edu/publications/policybriefs/AIANAdultReport1.pdf> (Page 1)

Population by Racial/Ethnic Group, Los Angeles County, 2003

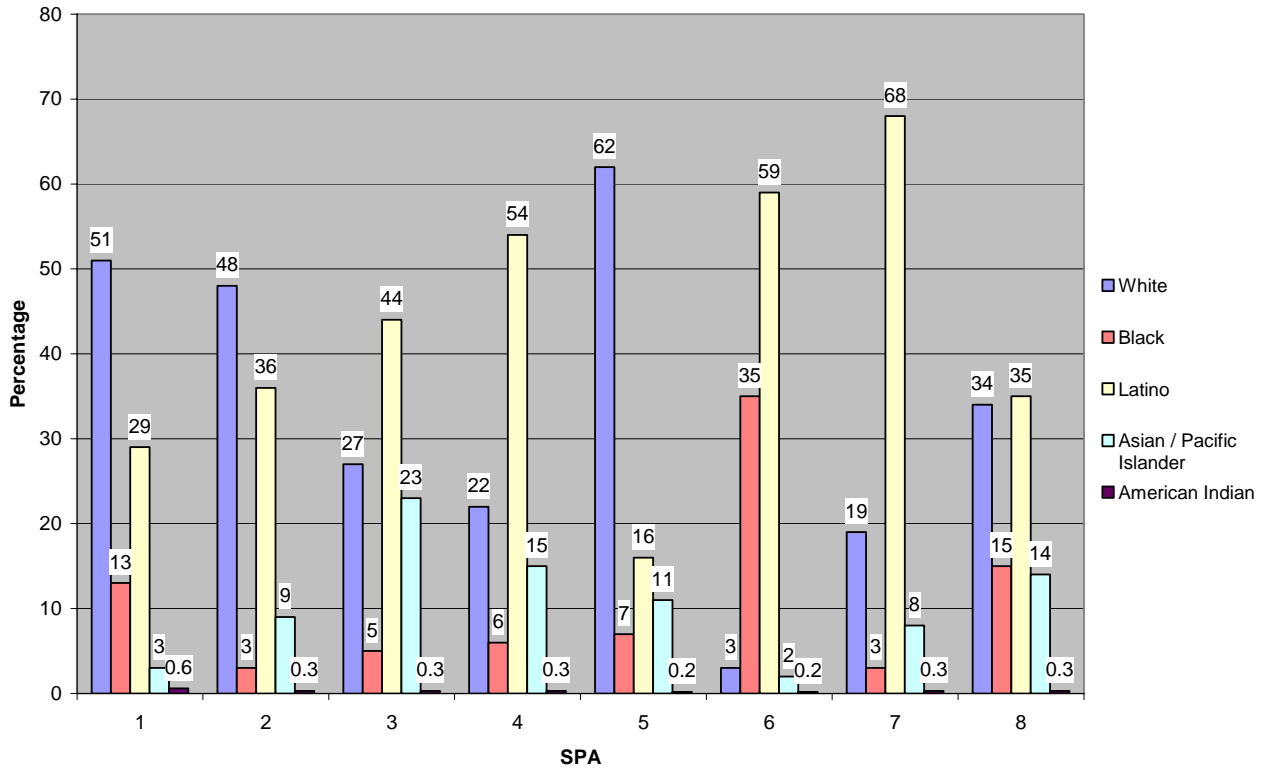


Source: California Health Interview Survey, 2003 (<http://www.chis.ucla.edu>)

For more in-depth information, please see the following links:

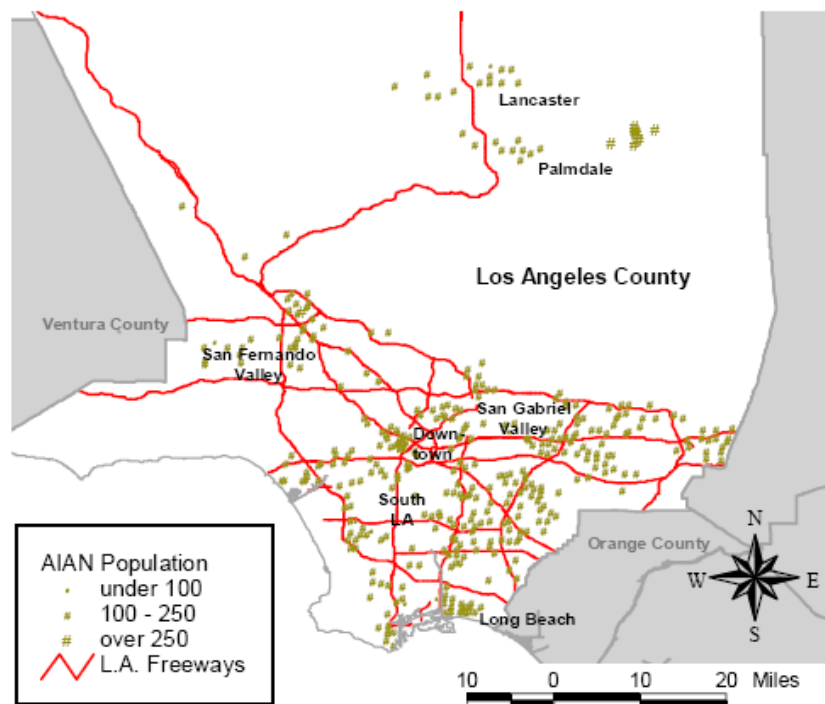
- **American Indian & Alaska Native Population by Tribal Affiliation in Los Angeles County**, 2000 Census: <http://www.laalmanac.com/population/po15.htm> (Los Angeles Almanac, U.S. Census Bureau)
- **American Indian & Alaska Native Population by City in Los Angeles County, Census 2000**: <http://www.laalmanac.com/population/po15a.htm> (Los Angeles Almanac, U.S. Census Bureau)

Percentage of Total Population for Each Racial/Ethnic Group by SPA (Service Planning Area) in Los Angeles County, 1999-2000



Source: Los Angeles County Department of Health Services, Office of Health Assessment and Epidemiology/Public Health, 2004, Los Angeles County http://lapublichealth.org/wwwfiles/ph/hae/hiv/2004_EpiProfile.PDF (page 9)

Geographic Distribution of AI/AN Total Population in Los Angeles County, 2000



Source: Los Angeles American Indian Children's Council, UCLA Ralph & Goldy Lewis Center for Regional Policy Studies, 2004; <http://lewis.spsr.ucla.edu/publications/policybriefs/AIANAdultReport1.pdf> (page 2)